

The User Manual of CardReader-2126

Version 2.0

Contents

I. Introduction

II. Installation

III. Uninstallation

IV. Limitation

I. Introduction

This utility is designed specifically for the OTi-2126. The key feature is “Precisely show specific icons and labels that are corresponding to the storage media inserted in the card reader device” with Windows 2000/XP system versions. (Please refer to Pic.1) Although originally there are four reserved drive IDs for one card reader, the utility hides all mount points while t no media exists. On Windows 98/ME operating systems, utility will not hide any of mount points whether or not any storage media is inserted. However, the default icon will be changed to a distinctive icon, if the corresponding media has been inserted in the card reader. Also, the default drive label will be replaced by a meaningful string on Windows ME.

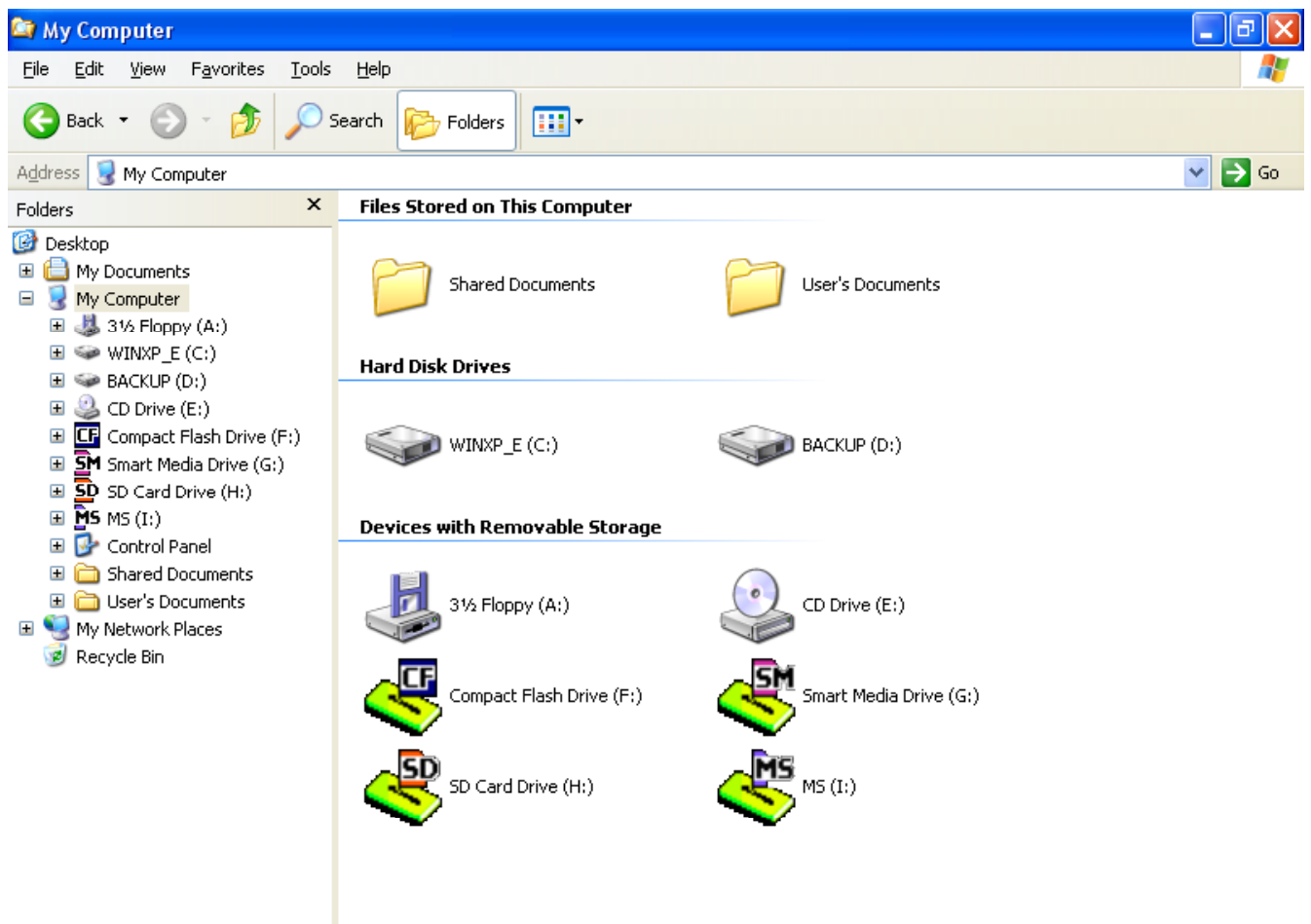
Installation of the utility is easy and simple. Once the utility is installed, it will keep running since it will automatically run during the operation system bootup sequence.

You are strongly suggested to uninstall the utility if those features are no longer needed. Otherwise, there might be some problems affecting disk management of operation systems.

The following table summarizes the features of the utility installed on 4 versions of Microsoft Windows operation system.

OS Version	Installation	Icons Change Mechanism	Labels Change Mechanism	Uninstallation
Win 98	Required	Precisely show specific icons when corresponding media inserted in card reader.	Use default labels.	Required
Win ME	Required	Replace default icons by customize icons when corresponding media inserted in card reader.	Replace default labels by customize labels when corresponding media inserted in card reader.	Required
Win 2K	Required	Just and only show customize icons when corresponding media inserted in card reader.	Just and only show customize labels when corresponding media inserted in card reader	Required
Win XP	Required	Just and only show customize icons when corresponding media inserted in card reader.	Just and only show customize labels when corresponding media inserted in card reader	Required

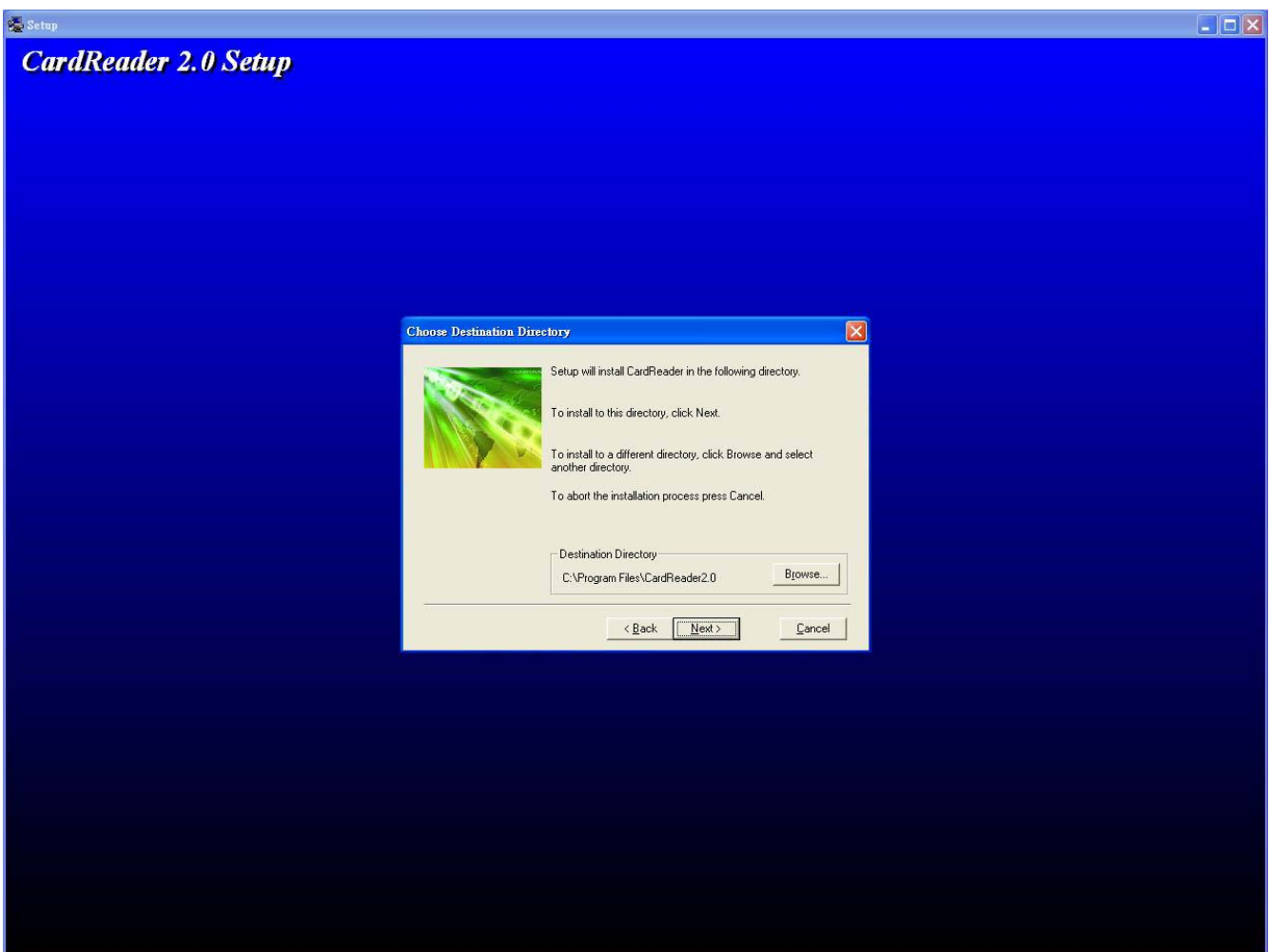
Pic.1



II. Installation

1. Double click the OTiCardReaderSetup.exe.
2. Follow the prompt to setup the utility.(Pic.2,3,4)
3. After the installation is finished, please reboot system to refresh the environment the utility would perform normally.

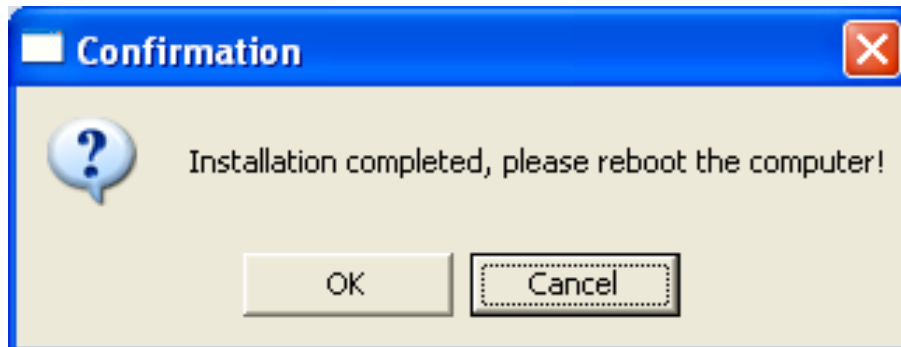
Pic.2



Pic.3



Pic.4



III. Uninstallation

1. Click the shortcut of Uninstall OTiCardReader from path : Begin\Programs\OTiCardReader
2. Follow the prompt to finish the uninstallation.(Pic.5,6,7)
3. After the uninstallation is finished, it's needed to re-plug the device to refresh drive icons and labels.

Pic.5



Pic.6



Pic.7



IV. Limitation

1. On Windows XP/ME, sometimes replacement of icons or labels would not show normally/smoothly upon file explorer as expectation. Users need to refresh it manually by press F5 key or close file explorer and then re-launch it.
2. On Windows 98, drive label is limited to be changed from registry value. So, this utility can't change any drive label even if media has been inserted in CardReader.
3. Uninstallation is strongly recommended if users decide to give up the utility. Otherwise, there might be some problems affecting disk management of operation system.